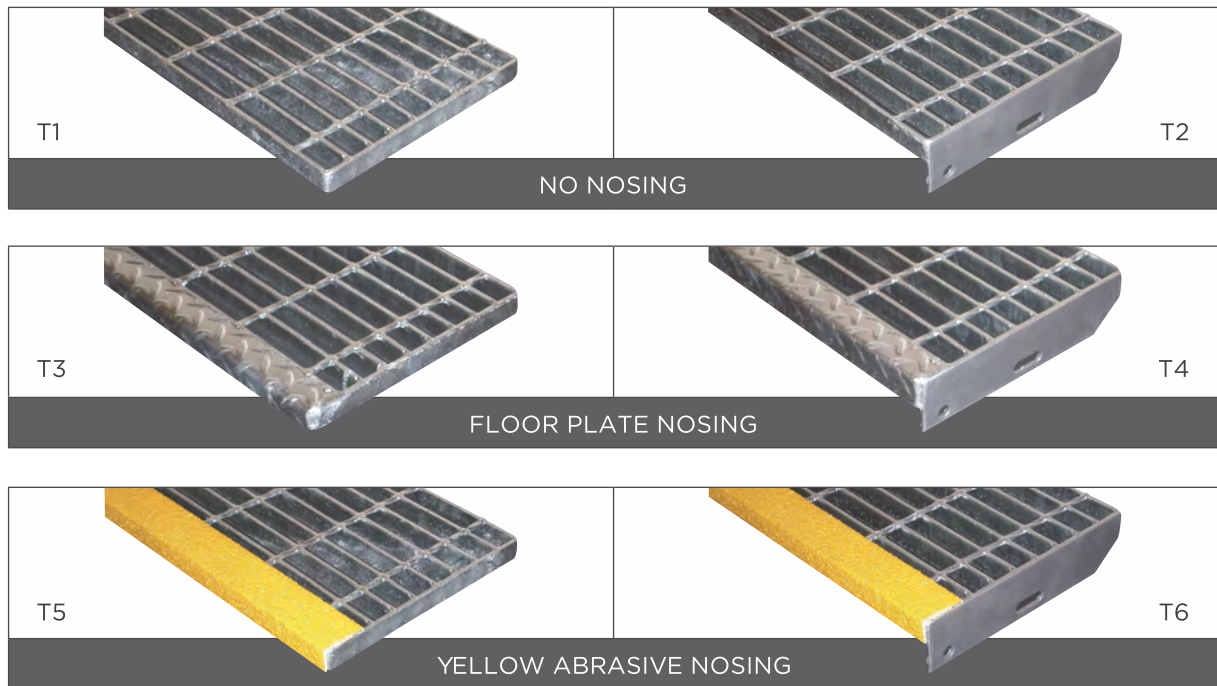




## STAIR TREAD TYPES:

### MILD STEEL AND ALUMINIUM

We can supply stair treads at any width and length to suit your application. Stair treads can be supplied with either a banded end / welded fixing or bolted end to suit your requirements. To complement our stair treads we can also provide them with no nosing, a floor plate nosing or a yellow abrasive nosing to best suit your application.



*\*Photos above show stair treads manufactured from mild steel galvanised grating.*

*Please note\* AS1657 states "the nosing shall be such that the edge of the stair tread is clearly visible against the background"*

## RECOMMENDED MAXIMUM SPAN FOR MILD STEEL AND ALUMINIUM GRATING TYPES

### MILD STEEL

MAXIMUM RECOMMENDED SPAN				RECOMMENDED WIDTHS						
Load Bar	25x5mm	32x5mm	40x5mm							
Series 1	900mm	1300mm	1600mm	125mm	155mm	185mm	215mm	245mm	275mm	305mm
Series 2	750mm	1200mm	1500mm	125mm	165mm	—	205mm	245mm	285mm	325mm
Series 3	600mm	875mm	—	125mm	—	185mm	—	245mm	—	305mm

### ALUMINIUM

MAXIMUM RECOMMENDED SPAN				RECOMMENDED WIDTHS						
Load Bar	25x5mm	32x5mm	40x5mm							
Series 1	675mm	850mm	1075mm	125mm	155mm	185mm	215mm	245mm	275mm	305mm
Series 2	—	750mm	900mm	125mm	165mm	—	205mm	245mm	285mm	325mm

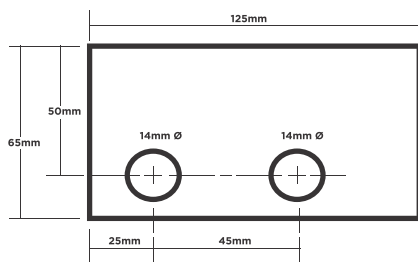
*\*Please note "the going shall not be less than 215mm" to comply with AS1657.*

## STANDARD END PLATES: MILD STEEL AND ALUMINIUM

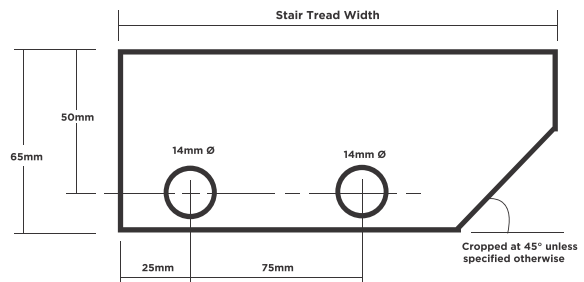
Standard end plates for stair treads are manufactured from 65x5mm flat bar for grating up to 40mm in depth. Non-standard end cleats can be made on request.

## RECOMMENDED END PLATES FOR VARIOUS STAIR TREAD WIDTHS

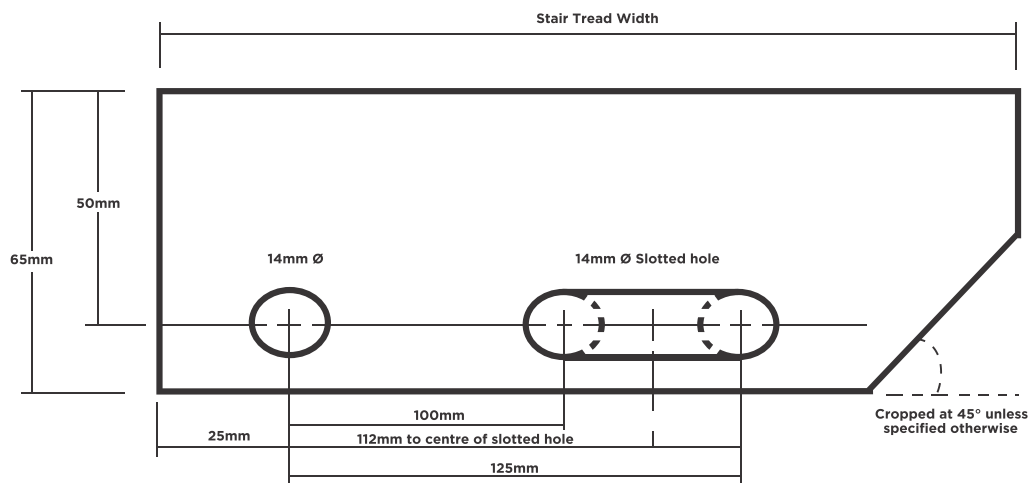
**FOR 125mm Stair Tread Width**



**FOR 155mm, 165mm & 185mm Stair Tread Width**



**FOR 205mm, 215mm, 245mm, 275mm, 285mm, 305mm, 325mm Stair Tread Widths**



## RECOMMENDED HOLE CENTRES FOR SLOTTED END PLATES

- 205, 215mm = 100mm centres
- 245, 275, 285, 305, 325mm = 125mm centres

## TOE BOARDS ON STAIR TREADS

Toe Boards can be incorporated into any of the above stair tread types in both Mild steel and Aluminium. A toe board is typically a flat bar welded to the back edge of a stair tread at a nominated height above the stair tread to close the openings between risers. Toe boards are optional and need to be specified if required at the time of ordering/quoting.



## FRP STAIR TREADS

### RECOMMENDED MAXIMUM SPANS FOR FRP STAIR TREADS

MAXIMUM RECOMMENDED SPAN (mm)				RECOMMENDED WIDTHS (mm)		
TYPE	FRP25mm	FRP38mm				
MOULDED	600	875		235	272	311

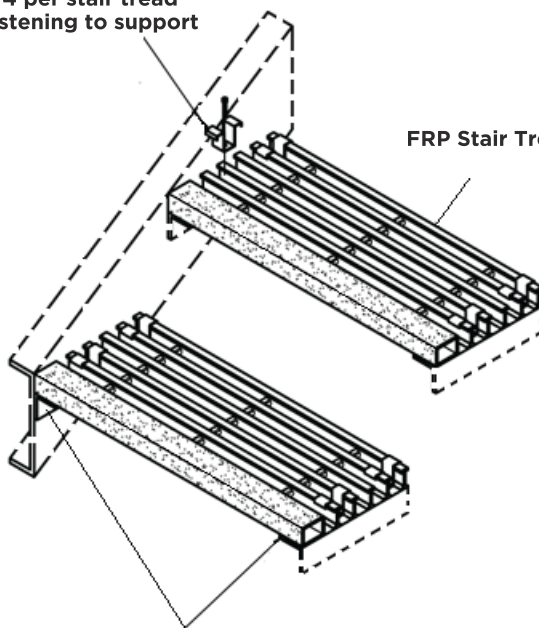
\* The recommend maximum spans are for static conditions. Deflections for impact loads or dynamic load will be in excess of 5mm

\* Long term loads will result in additional deflections due to creep in the material

\* For applications at elevated temperatures, please consult Steel Grating Ltd.

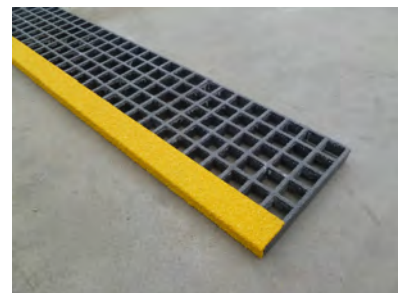
Stainless Steel "M"  
clips, 4 per stair tread  
for fastening to support

FRP Stair Tread



Support Angle for FRP stair tread

MOULDED FRP STAIR TREAD



\*FRP stair treads require a minimum of 40mm support surface at each end for the grating to sit on and require 4 off stainless steel "M" clips per stair tread for fixing to supporting structure.