



ANCILLARY ITEMS



ANCILLARY ITEMS

YELLOW ABRASIVE NOSING'S AND GRIP PLATE

Steel Grating Ltd supply FRP yellow abrasive nosing's for the leading edge of stair treads and landings where required. These provide a superior non-slip surface and being yellow in colour provides excellent definition against the background as per the requirements of AS1657. In addition to our yellow abrasive nosing's we also supply a 3mm thick yellow abrasive sheeting (Grip plate) for installation on any flooring surfaces. Our yellow abrasive nosing and grip plate are ideal in any wet, slippery, oily or dirty conditions.

Our yellow abrasive nosings and grip plate can be easily installed to new areas or existing problematic areas. Being of fibre glass construction this provides a tough, durable and long lasting solution to meet your requirements while also providing excellent UV and chemical resistance.

Our yellow abrasive nosings and grip plate have been tested in accordance, and comply with AS/NZS 3661.1:1993(wet) for pedestrian slip resistance

YELLOW ABRASIVE NOSINGS:

Dimensions: Any length up to 3000mm x 50mm wide x 25mm deep x3mm thick.

YELLOW ABRASIVE GRIP PLATE:

Standard sheet size: 1200mmx2400mmx3mm.

From our standard sheet size we can cut into strips, squares, rectangles or any shapes to suit the requirements of the area.

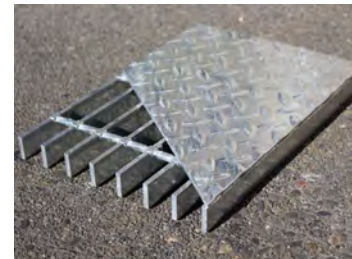
APPLICATIONS:

- Steel, Aluminium and FRP grating stair treads and landings
- Floor plate stair treads and landings
- Wooden stair treads and landings
- Concrete stair treads and landings



GRATE PLATE:

Steel Grating Ltd can supply Mild Steel and Aluminium grating with 3 or 5mm checker plate welded to the top side of the grating. Checker plate can be welded to any of our standard grating types we supply. Checker plate provides a solid surface to the grating. The combination of checker plate and grating maximises the spanning capabilities for a variety of applications.



GRATE MESH:

Steel Grating Ltd can supply any Mild Steel gratings with a light gauge mesh welded to the top side or underside of our grating to prevent small objects and tools from falling through the grating to areas below. When a light gauge mesh with the dimensions of LWD 30mm x SWD 12mm is used, this complies with AS1657 clause 4.5.

