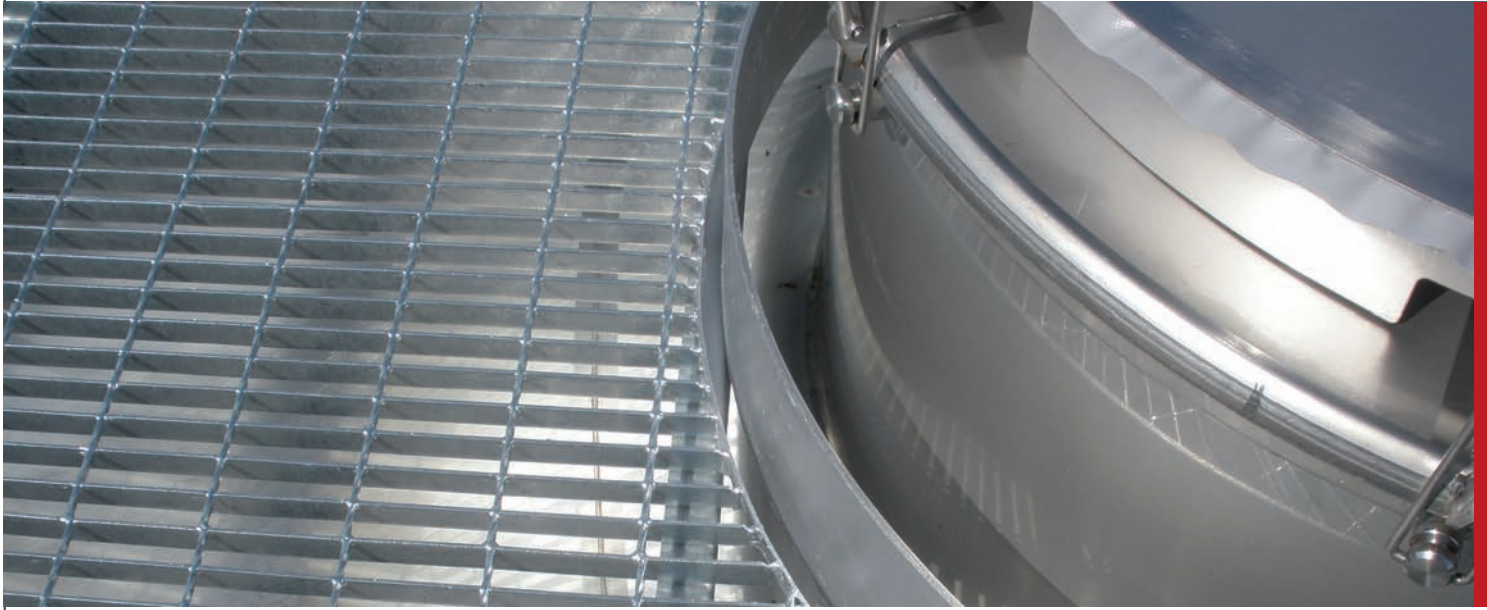


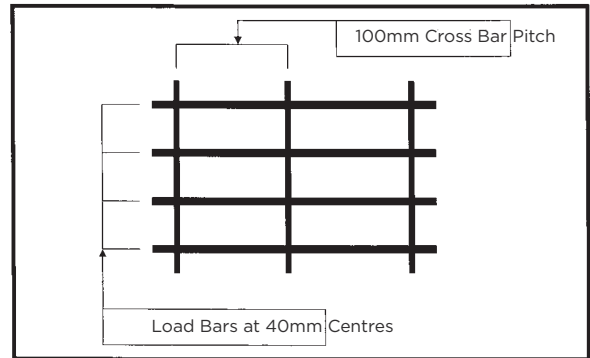
STEEL GRATING SERIES 2





STEEL GRATING SERIES 2 (40MM CENTRES)

Steel Grating Limited provides Series 2 Grating in both forge bar and twistlock. The lightweight and economical design of our Series 2 Grating makes it ideal for walkways, fixed platforms, stairways and ladders.



Forge welded (Mild Steel)	Twistlock (Mild Steel)	Twistlocks (Aluminium)
25 x 3	20 x 3	20 x 3
25 x 5	20 x 5	20 x 5
30 x 5	25 x 3	25 x 3
40 x 5	25 x 5	25 x 5
	32 x 3	32 x 3
	32 x 5	32 x 5
	40 x 3	40 x 3
	40 x 5	40 x 5
	50 x 3	50 x 3
	50 x 5	50 x 5

Note: Serrated grating in Series 2 is only available in twistlock (mild steel and Aluminium)



STEEL GRATING

TWISTLOCK AND FORGE WELDED STEEL GRATING

(Same as chart on page 10)

Safe Loads and Deflections for Load Bars

Main Bars mm	Mass Kg/sqm	Self WT kPa	(l)	600	900	1200	1500	1800	2100	2400	Span for 5mm defl @ 4kPa																													
20 x 3	15.54	0.152	U	18.91	8.32	CHECK DEFLECTION FOR LOADS & SPANS THIS SIDE OF SHADOW LINE					998																													
			D	3.08	6.87																																			
			C	5.67	3.74	Series 2 40 mm Bar Centres																																		
			D	2.47	5.49																																			
20 x 5	23.39	0.229	U	31.55	13.89											1134																								
			D	3.09	6.88																																			
			C	9.46	6.25																																			
			D	2.47	5.50																																			
25 x 3	18.49	0.181	U	29.61	13.06																					1180														
			D	2.47	5.52																																			
			C	8.88	5.88																																			
			D	1.98	4.42																																			
25 x 5	28.30	0.278	U	49.38	29.79																										12.14						1341			
			D	2.47	5.53																										9.73									
			C	14.81	9.81	7.28																																		
			D	1.98	4.42	7.78																																		
32 x 3	22.61	0.222	U	48.59	21.47	11.98																									1420									
			D	1.93	4.33	7.63																																		
			C	14.58	9.66	7.19																																		
			D	1.55	3.46	6.10																																		
32 x 5	35.17	0.345	U	81.01	35.81	19.99																12.67									1614									
			D	1.93	4.33	7.64																11.83																		
			C	24.30	16.11	12.00																9.50																		
			D	1.55	3.46	6.11																9.46																		
40 x 3	27.32	0.268	U	76.00	33.63	18.80																11.93																1679		
			D	1.55	3.47	6.13																9.51																		
			C	22.80	15.13	11.28	8.95																																	
			D	1.24	2.78	4.91	7.61																																	
40 x 5	43.02	0.422	U	126.69	56.07	31.36	19.92						13.70									1908																		
			D	1.55	3.47	6.13	9.51						13.57																											
			C	38.01	25.23	18.81	14.94						12.33																											
			D	1.24	2.78	4.91	7.61						10.86																											
45 x 5	47.92	0.470	U	160.40	71.03	39.75	25.27						17.40																									2084		
			D	1.38	3.09	5.46	8.48						12.11																											
			C	48.12	31.96	23.85	18.95						15.66																											
			D	1.10	2.47	4.37	6.78						9.69																											
50 x 5	52.83	0.518	U	198.09	87.75	49.13	31.26						21.55																					15.69						2255
			D	1.24	2.78	4.92	7.64						10.93																					14.75						
			C	59.43	39.49	29.48	23.44	19.39	16.48																															
			D	0.99	2.33	3.94	6.12	8.74	11.80																															

U: Safe Superimposed Uniformly Distributed Load - kPa

C: Safe Superimposed Line Load - kN/m

D: Deflection due to Superimposed Load - mm

STEEL GRATING

TWISTLOCK ALUMINIUM GRATING SERIES 2

(Same as chart on page 11)

40mm Bar Centres

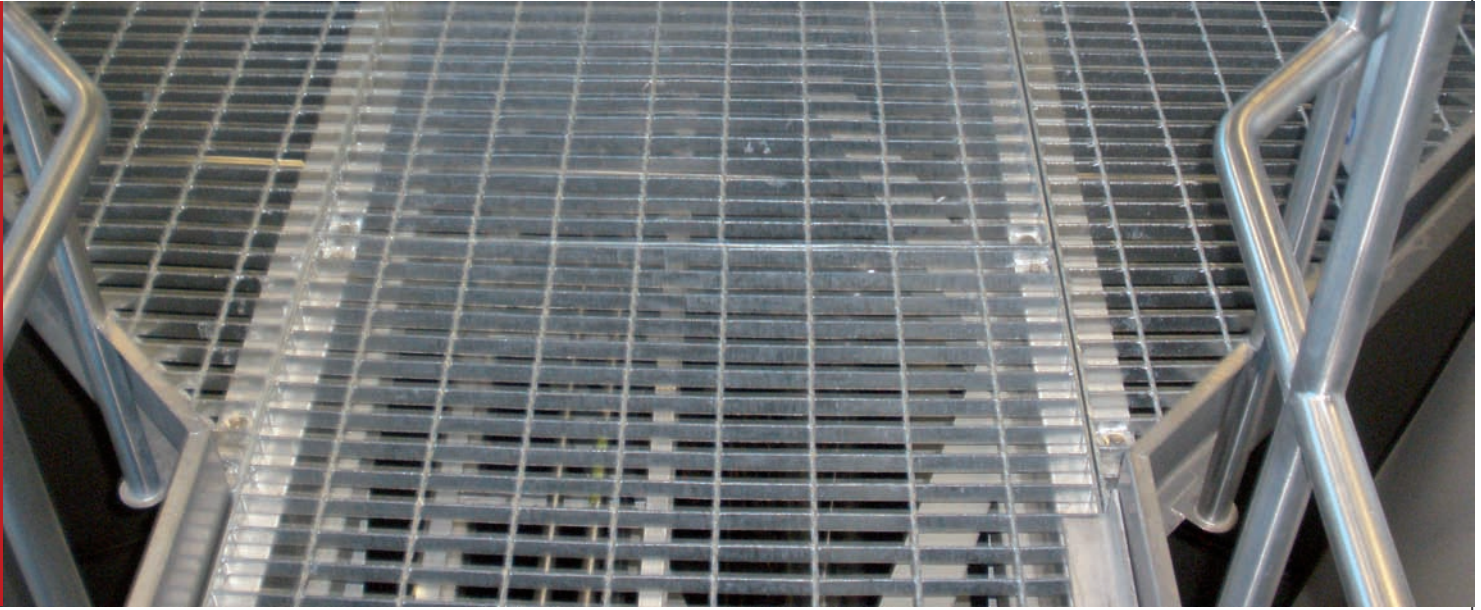
TABLE 1a – Safe Loads and Deflections for Load Bars @Based on a Yield Stress of: 172 MPa and Design Stress of: No of bars 26 per 115.24 MPa met SPAN mm

Main Bars mm	Mass kg/sqm	Self Wt kPa	1	150	300	450	600	750	900	1050	1200	1500	1800	Span for 5mm defl @ 4kPa																																							
20 x 3	5.51	0.054	U	213.01	53.21	23.62	13.26	8.47						760																																							
			D	0.39	1.55	3.48	6.18	9.64																																													
			C	15.98	7.98	5.31	3.98	3.18																																													
			D	0.31	1.24	2.79	4.94	7.71																																													
20 x 5	8.32	0.082	U	355.03	88.70	39.38	22.11	14.12																864																													
			D	0.39	1.55	3.48	6.18	9.64																																													
			C	26.63	13.30	8.86	6.63	5.30																																													
			D	0.31	1.24	2.79	4.95	7.71																																													
25 x 3	6.56	0.064	U	332.85	83.16	36.93	20.74	13.25																					9.18						899																		
			D	0.31	1.24	2.79	4.95	7.72																					11.09																								
			C	24.96	12.47	8.31	6.22	4.97																					4.13																								
			D	0.25	0.99	2.23	3.96	6.18																					8.87																								
25 x 5	10.07	0.099	U	554.76	138.62	61.55	34.58	22.10																					15.31																1021								
			D	0.31	1.24	2.79	4.95	7.72																					11.10																								
			C	41.61	20.79	13.85	10.37	8.29																					6.89																								
			D	0.25	0.99	2.23	3.96	6.18																					8.88																								
32 x 3	8.04	0.079	U	545.37	136.28	60.53	34.01	21.74	15.01	11.05																			1082																								
			D	0.24	0.97	2.18	3.87	6.04	8.68	11.79																																											
			C	40.90	20.44	13.62	10.20	8.15	6.78	5.80																																											
			D	0.19	0.78	1.74	3.10	4.83	6.95	9.44																																											
32 x 5	12.53	0.123	U	908.96	227.15	100.89	56.69	36.24	25.13	18.43											14.08								1229																								
			D	0.24	0.97	2.18	3.87	6.04	8.68	11.80											15.38																																
			C	68.17	34.07	22.70	17.01	13.59	11.31	9.68											8.45																																
			D	0.19	0.78	1.74	3.10	4.83	6.95	9.44											12.31																																
40 x 3	9.72	0.095	U	852.17	212.97	94.60	53.17	34.00	23.58	17.30											13.22																													1279			
			D	0.19	0.78	1.74	3.10	4.83	6.95	9.45											12.32																																
			C	63.91	31.95	21.29	15.95	12.75	10.61	9.08											7.93																																
			D	0.16	0.62	1.39	2.48	3.87	5.56	7.56											9.86																																
40 x 5	15.34	0.150	U	1420.29	354.96	157.68	88.63	56.67	39.31	28.84											22.04																													1453			
			D	0.19	0.78	1.74	3.10	4.84	6.95	9.45											12.33																																
			C	106.52	53.24	35.48	26.59	21.25	17.69	15.14											13.23																																
			D	0.16	0.62	1.39	2.48	3.87	5.56	7.56											9.86																																
45 x 5	17.09	0.168	U	1797.58	449.27	199.58	112.19	71.74	49.77	36.52	27.92	17.81									1587																																
			D	0.17	0.69	1.55	2.75	4.30	6.18	8.41	10.97	17.08																																									
			C	134.82	67.39	44.91	33.66	26.90	22.40	19.17	16.75	13.36																																									
			D	0.14	0.55	1.24	2.20	3.44	4.95	6.73	8.77	13.66																																									
50 x 5	18.85	0.185	U	2219.25	554.67	246.42	138.53	88.59	61.47	45.11	34.49	22.01																																								1718	
			D	0.16	0.62	1.40	2.48	3.87	5.57	7.57	9.88	15.39																																									
			C	166.44	83.20	55.44	41.56	33.22	27.66	23.68	20.70	16.51																																									
			D	0.12	0.50	1.12	1.98	3.10	4.45	6.06	7.90	12.31																																									

U: Safe Superimposed Uniformly Distributed Load – Kpa

C: Safe Superimposed Line Load – kN/m

D: Deflection due to Superimposed Load – mm



STEEL GRATING SERIES 2 (40MM CENTRES)

	Maximum Span (mm) for various Loads With 5.00mm Deflections			
	2.5 KPa	4.0 KPa	5.0 KPa	7.5 KPa
203/2	1115	955	940	855
205/2	1285	1135	1160	970
253/2	1315	1175	1120	1010
255/2	1485	1330	1260	1145
323/2	1595	1415	1335	1195
325/2	1785	1595	1505	1370
403/2	1875	1680	1575	1430
405/2	2110	1895	1785	1615
505/2	2605	2005	2105	1915

STEEL GRATING TYPICAL APPLICATION LOADINGS

Conveyor Walkways Light Access Platforms	2.5 KPa
Standard Australian Platform Loading	4 KPa
British Standard Platform Loading	5 KPa
Boiler House Platform Loading esp Power Station	7.5 KPa